

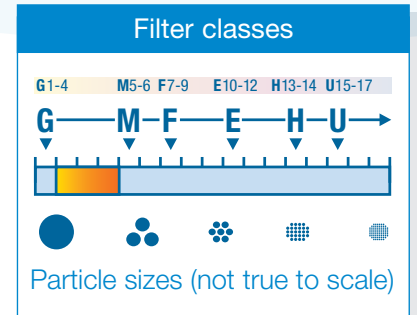


# Coarse Filtration Pocket Filters

**G3 - M5** Tested according to EN 779:2012



Fire retardant to DIN53438-3 (F1)



Our range of G3-M5 bag filters are highly effective at removing large particles from the air stream. They can be used as stand alone filters or pre filtration for higher grade filters, greatly enhancing Indoor Air Quality (IAQ).

**Choose Coarse Dust Pocket Filters for cleaner IAQ.**

## THE KEY BENEFITS

### 1 Effective performance

Fire rated to DIN53438-3 (F1), the non-shedding synthetic media has a progressive structure enabling the full depth of the material to be used, increasing its dust holding capacity and delivering fantastic performance.

### 2 Longer service life

Operating as either stand alone filters or pre filtration for higher grade filters, the progressive media structure delivers exceptional dust holding capacity and extended service life.

### 3 Environmentally friendly

Our filters are made from Oeko-Tex 100 approved synthetic media, meaning they are free from harmful substances, allergens and skin irritants. They are also fully incinerable, eliminating the need to go to landfill.\*



**Air conditioning & ventilation technology**



**Painting & drying technology**



# Coarse Filtration Pocket Filters

## APPLICATIONS

- Pre-filtration for higher grade filters
- Offices, schools, hospitals
- Retail environments, food industries
- Grease eliminator for commercial kitchens, bakeries and restaurants

## VERSIONS

- Full range of standard and bespoke sizes available
- Frame types:
  - metal frame 20 or 25mm
  - plastic frame 25mm

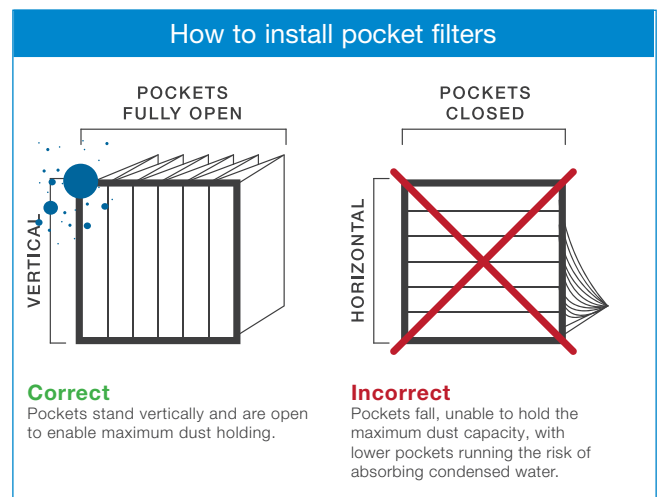
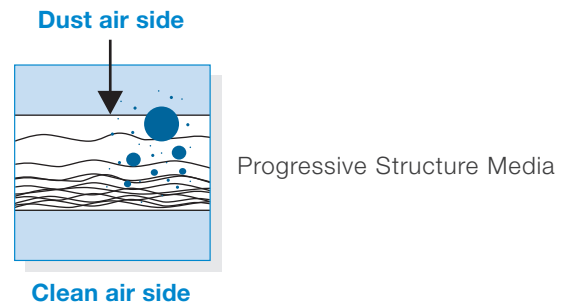
## CLASSIFICATION

- Filter class G3 - M5

## MATERIAL CHARACTERISTICS

- Progressive synthetic structure
- Fire prevention requirements according to DIN 53438-3 (F1)
- Tested according to EN 779:2012
- High dust holding capacity
- Oeko-Tex 100 approved
- Temperature resistant up to 80°C

## HIGH DUST HOLDING PROGRESSIVE STRUCTURE MEDIA



Performance (6, 5, 3 Pockets)					
Dimensions W x H x D	Airflow [m³/h]	No. of Pockets	Initial Pressure Drop [Pa]		
			G3	G4	M5
592x592x300	3400	6	65	75	105
492x592x300	2800	5			
287x592x300	1700	3			
592x592x360	3400	6	60	65	90
492x592x360	2800	5			
287x592x360	1700	3			
592x592x500	3400	6	40	50	55
492x592x500	2800	5			
287x592x500	1700	3			
592x592x600	3400	6	35	40	50
492x592x600	2800	5			
287x592x600	1700	3			