



# AirSyntex

## Air Filters

Fire retardant to DIN53438-3 (F1)



Certificate No: 15.06.011. Volz GmbH.



F9/ePM 1 80%



Our F9 **AirSyntex** Air Filters achieve ePM 1 80% delivering consistent energy efficient performance.

Tested according to ISO 16890/EN 779:2012, and Eurovent approved, **AirSyntex** are used widely across a number of environments including retail, commercial, healthcare, education, engineering, hotels, leisure and pharmaceutical.

**AirSyntex Air Filters are the leading choice for a fully compliant, clean air solution.**

Filter class acc. to ISO 16890	ePM 1 80%	
Average efficiency	ePM 1	80%
	ePM 2,5	90%
	ePM 10	97%



## THE KEY BENEFITS

### 1 — Excellent service life

The tight woven, ultra-fine fibre structure with two stage filtration ensures high dust holding capacity for longer service life with a low initial and average pressure drop, saving time, energy and reducing costs.

### 2 — Tested according to ISO 16890, EN 779:2012 and Eurovent approved

With third party Eurovent approval and ISO 16890/EN 779:2012 certification you can be confident that **AirSyntex** will perform consistently at the specified energy and performance standards. In addition to this they are tested to fire prevention requirements DIN 53438-3 (F1).

### 3 — Environmentally friendly

**AirSyntex** are Oeko-Tex 100 approved, meaning they are free from harmful substances and skin irritant. The plastic frame option offers the additional benefit of being fully incinerable eliminating the need for landfill.



**Air conditioning & ventilation technology**



**Painting & drying technology**



# AirSyntex

F9/ePM 1 80%

## VERSIONS

- Full range of standard sizes, bespoke sizes available
- Frame types:
  - Metal frame (20 or 25mm)
  - Plastic frame (25mm)
- Filters with plastic frames are fully incinerable
- Option to have a foamed hygiene-gasket

## MATERIAL CHARACTERISTICS

- Tested according to EN 779:2012, ISO 16890 and Eurovent approved
- Fire prevention requirements according to DIN53438-3 (F1)
- Oeko-Tex 100 approved, environmentally friendly so can be incinerated rather than going to landfill (when choosing plastic frames)
- Humidity resistant up to 100% r. h.
- Lacquer compatibility according to IPA-control
- Environmentally safe non-shedding synthetic fibres
- Temperature resistant up to a maximum of 70°C depending on type of frame

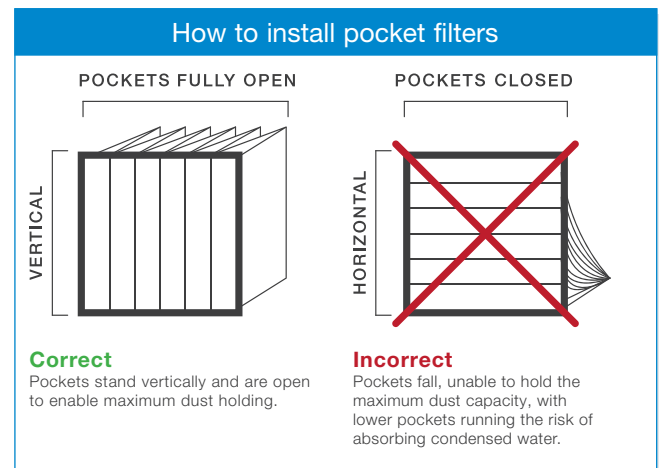
## APPLICATIONS

For fine filtration in heat ventilation and air conditioning devices and plants of all kinds.

- Offices, hospitals, computing centres
- Pharmaceutical, fine-mechanical and food industry
- Prefiltration e.g. for HEPA filters

## CLASSIFICATION

- Filter class F9/ePM 1 80%



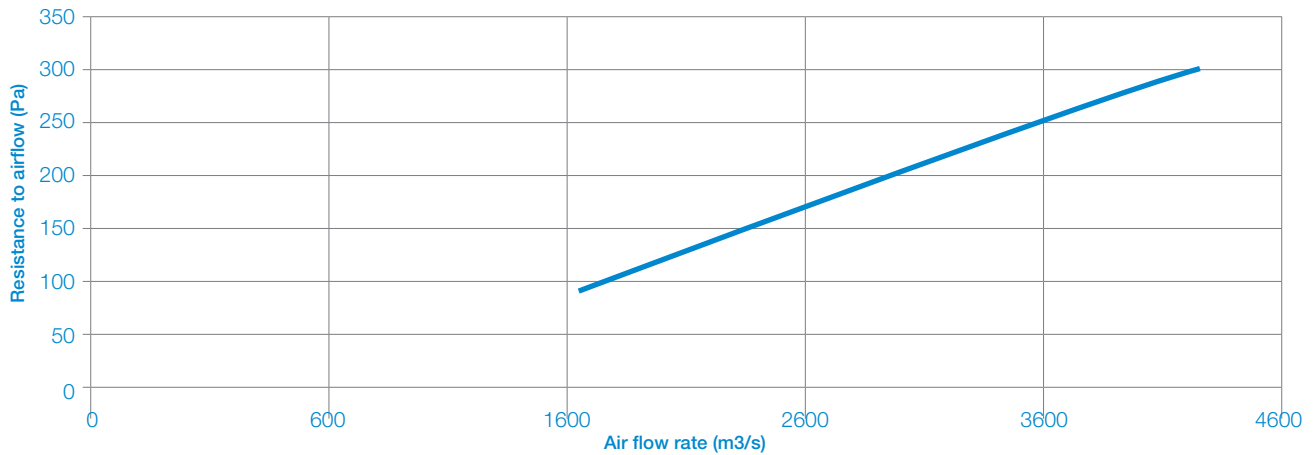
Technical data:	
<b>Medium</b>	Synthetic - Progressive microfibre
<b>Colour medium</b>	White
<b>Frame</b>	Plastic frame (25 mm) Metal frame (20 or 25 mm)
<b>Filter dimensions (W x H x D)</b>	592 x 592 x 635 (mm)
<b>Number of pockets</b>	10
<b>Filter area [m<sup>2</sup>]</b>	7.5
<b>Filter class</b>	F9/ePM 1 80%
<b>Energy Class</b>	3.391 kWh/Year
<b>Recommended nominal air flow (m<sup>3</sup>/h)</b>	3400
<b>Maximum air flow (m<sup>3</sup>/h)</b>	4250
<b>Initial pressure drop approx. (Pa)</b>	220
<b>Recommended final pressure drop (Pa)</b>	300
<b>Average arrestance (%)</b>	≥ 90
<b>Average efficiency (0,4 µm) (%)</b>	≥ 80 < 90
<b>Discharged efficiency of medium (0,4 m) (%)</b>	> 35
<b>Maximum humidity resistance (%)</b>	100
<b>Max. operating temperature (°C) - depending on type of frame</b>	70



# AirSyntex

F9/ePM 1 80%

**Performance Graph (592 x 592 x 635, 10 Pocket)**



**Standard Frame Sizes & Pocket Lengths\***

Dimensions (mm) (width x height x depth)	Number of pockets	Filter area (m <sup>2</sup> )	Nominal air flow (m <sup>3</sup> /h) Initial pressure drop (Pa)
287 x 287 x 360	3	0.6	500 / 192Pa
287 x 592 x 360	3	1.3	1.000 / 192Pa
287 x 892 x 360	3	1.9	1.500 / 192Pa
490 x 592 x 360	5	2.1	1.600 / 192Pa
490 x 892 x 360	5	3.2	2.500 / 192Pa
592 x 287 x 360	6	1.2	900 / 192Pa
592 x 490 x 360	6	2.1	1.600 / 192Pa
592 x 892 x 360	6	3.9	3.000 / 192Pa
287 x 287 x 500	3	0.9	700 / 192Pa
287 x 592 x 500	3	1.8	1.400 / 192Pa
287 x 892 x 500	3	2.7	2.100 / 192Pa
490 x 592 x 500	5	3.0	2.300 / 192Pa
490 x 892 x 500	5	4.5	3.500 / 192Pa
592 x 287 x 500	6	1.7	1.300 / 192Pa
592 x 490 x 500	6	2.9	2.300 / 192Pa
592 x 892 x 500	6	5.4	4.200 / 192Pa
287 x 287 x 635	5	1.8	800 / 220Pa
287 x 592 x 635	5	3.8	1.700 / 220Pa
287 x 892 x 635	5	5.7	2.600 / 220Pa
490 x 592 x 635	8	6.0	2.700 / 220Pa
490 x 892 x 635	8	9.1	4.100 / 220Pa
592 x 287 x 635	10	3.6	1.600 / 220Pa
592 x 490 x 635	10	6.2	2.800 / 220Pa
592 x 892 x 635	10	11.3	5.100 / 220Pa